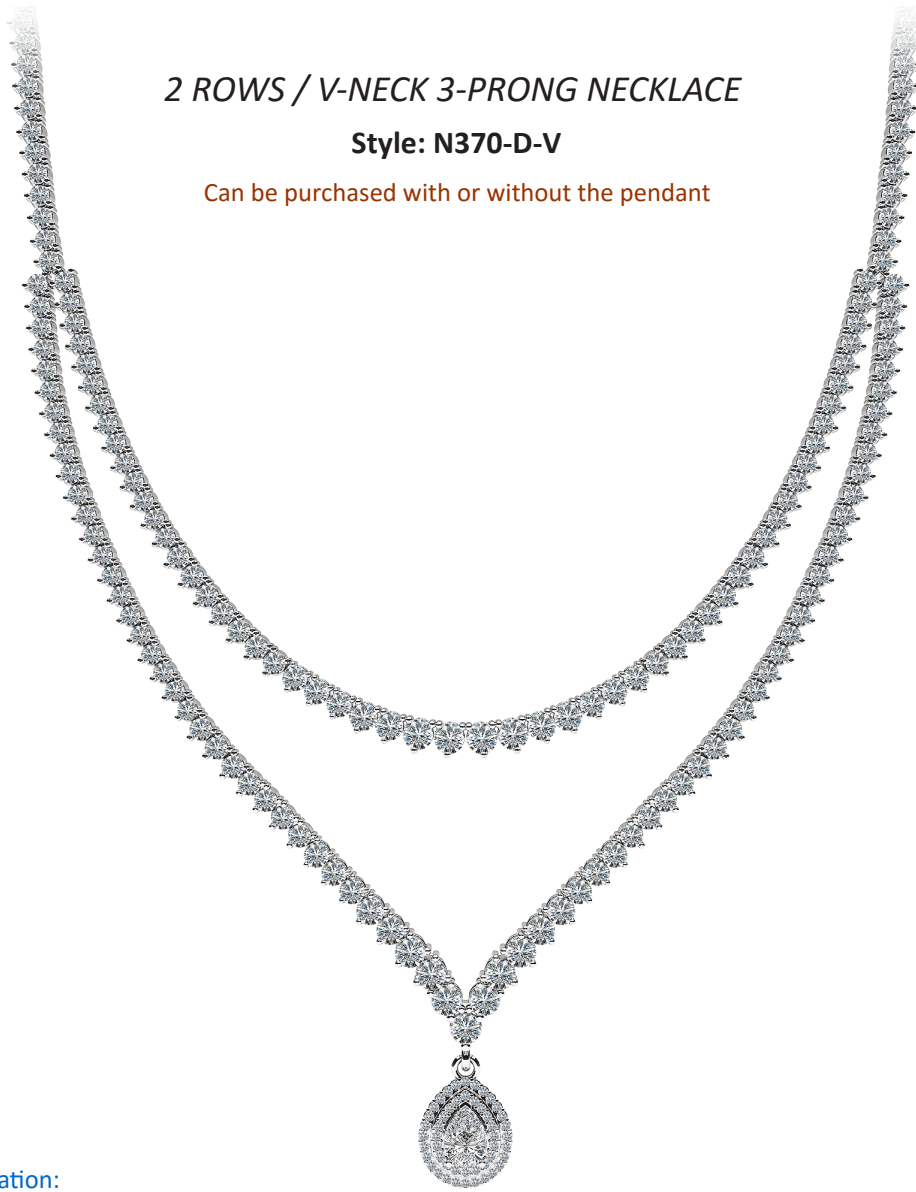


2 ROWS / V-NECK 3-PRONG NECKLACE

Style: N370-D-V

Can be purchased with or without the pendant



Recommended Configuration:

N370-D-V 14.89 ct. 284 Dia. 32.0 Gr. 17" (including pendant shown)

Necklace Section (Style N369): 13.87 ct. 29.6 Gr.

Row 1 Outside: 7x.16, 4x.12, 6x.10, 14x.07, 138x.047 (3.5, 3.2, 2.9, 2.6, 2.3mm)

Row 2 Middle: 4x.16, 4x.12, 6x.10, 14x.07, 26x.047 (3.5, 3.2, 2.9, 2.6, 2.3mm)

2 Row Connector: 6x.047 (2.3mm)

Pendant Section (Style SP83 7x5mm): 1.02 ct. 2.4 Gr.

1x.75, 54x.005=1.02 ct. (1mm, 7x5mm Pear Shape)

Also Available without the pendant section.

Additional available pendant options:



SP87-A 1.80 ct. 36 Dia. 34x.007, 1x.06, 1x1.50=1.80 ct.
(1.1, 2.5, 8x6mm emerald) 3.0 Gr.



SP83 6x4mm 49 Dia. 48x.005, 1x.50=.74 ct.
(1mm, 6x4mm pear) 2.0 Gr.

SP83 7x5mm 55 Dia. 54x.005, 1x.75=1.02 ct.
(1mm, 7x5mm pear) 2.3 Gr.



SP84 4.4mm 17 Stones 16x.007, 1x.50=.61 ct. 1.7 Gr. (cushion ctr)

SP84 5.5mm 19 Stones 18x.007, 1x1.00=1.13 ct. 1.9 Gr. (cushion ctr)

SP84 6.5mm 23 Stones 22x.007, 1x1.50=1.65 ct. 2.0 Gr. (cushion ctr)

SP84 7.0mm 25 Stones 24x.007, 1x2.00=2.17 ct. 2.2 Gr. (cushion ctr)

Custom configurations are available. Call or email for special orders.