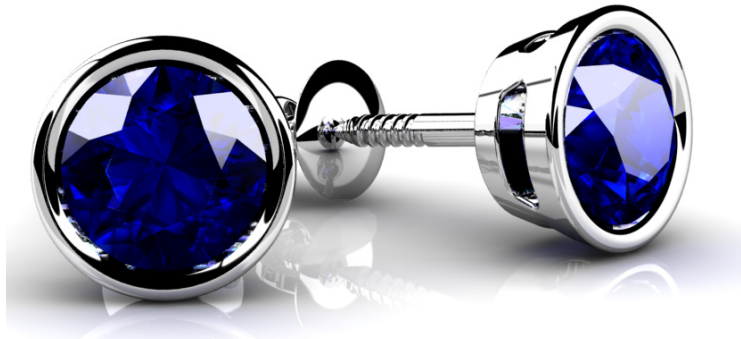


# Designer Stud Earrings



<b>ST981 1.25 ct.</b>	2 Dia.x.12=.24 ct.	1.0 Gr.	(3.2mm)
<b>ST981 .32 ct.</b>	2 Dia.x.16=.32 ct.	1.0 Gr.	(3.5mm)
<b>ST981 .50 ct.</b>	2 Dia.x.25=.50 ct.	1.1 Gr.	(4mm)
<b>ST981 .76 ct.</b>	2 Dia.x.38=.76 ct.	1.2 Gr.	(4.6mm)
<b>ST981 1.00 ct.</b>	2 Dia.x.50=1.00 ct.	1.3 Gr.	(5mm)
<b>ST981 1.30 ct.</b>	2 Dia.x.63=1.26 ct.	1.4 Gr.	(5.4mm)
<b>ST981 1.50 ct.</b>	2 Dia.x.75=1.50 ct.	1.5 Gr.	(5.7mm)
<b>ST981 2.00 ct.</b>	2 Dia.x1.00=2.00 ct.	1.7 Gr.	(6.5mm)
<b>ST981 3.00 ct.</b>	2 Dia.x1.50=3.00 ct.	2.0 Gr.	(7.4mm)

Enlarged to Show Detail